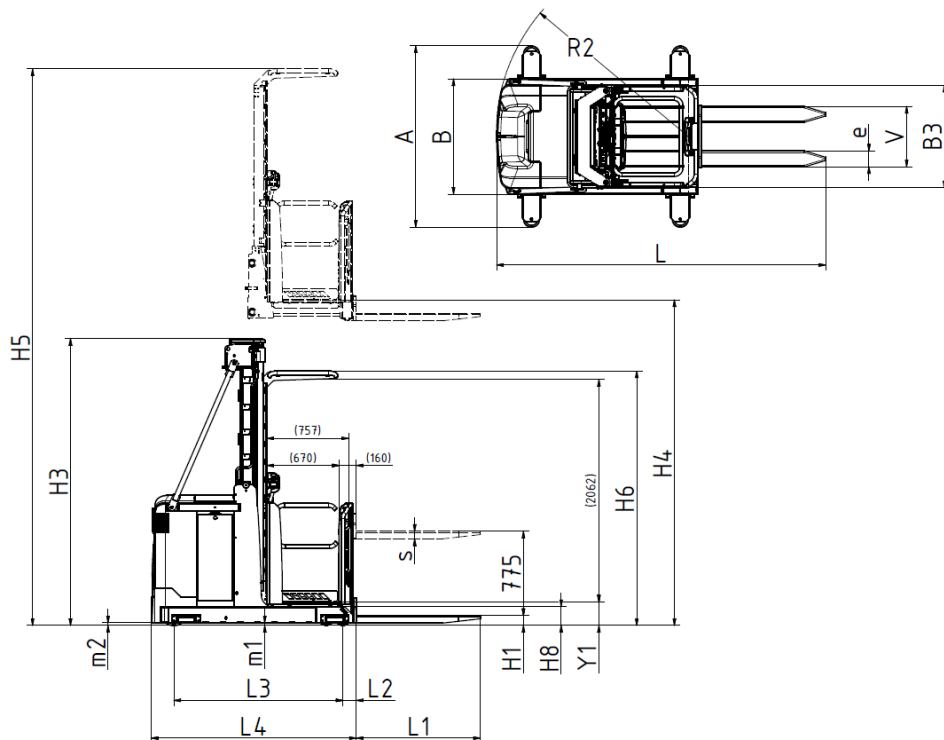


**EPH 125 DTFV**

1250 kg high level order picker.  
 Providing picking heights up to 12.100 mm. Combining great performance with high levels of safety.



| Mast Type         | Standard lift height H4 | Min mast height H3 | Max mast height H5 |
|-------------------|-------------------------|--------------------|--------------------|
| Telescopic        |                         |                    |                    |
| Double telescopic | 6000                    | 2770               | 8160               |
|                   | 6750                    | 3020               | 8910               |
|                   | 7500                    | 3270               | 9660               |
|                   | 8250                    | 3520               | 10410              |
|                   | 9000                    | 3770               | 11160              |
|                   | 9750                    | 4020               | 11910              |
|                   | 10500                   | 4270               | 12660              |

|                       |   |  |  |           |                         |                                 |
|-----------------------|---|--|--|-----------|-------------------------|---------------------------------|
| Lift capacities       | 0   | Specification  |  |           | EPH 125 DTFV            |                                 |
|                       | 0a  | Straddle leg position  |  |           | Narrow                  |                                 |
|                       | 1   | Lift capacity  | Q  | kg        | 1250                    |                                 |
|                       | 1a  | Load centre  | D  | mm        | 400-600                 |                                 |
|                       | 2   | Lift height  | H4                                       | mm        | 6000-10500              |                                 |
|                       | 2a  | Mast height  | H3/H5                                    | mm        | H3=H4/3+770, H5=H4+2160 |                                 |
|                       | 2b  | Transport free lift  | H2 TV mast                               | mm        | n/a                     |                                 |
|                       | 2c  | Full free lift   | H2 DT mast                               | mm        | n/a                     |                                 |
|                       | 2d  | Straddle lift  |  | mm        | n/a                     |                                 |
|                       | 3   | Mast tilt. Forward - backward                                |  |           | n/a                     |                                 |
|                       | 3a  | Tilting forks. Forward - backward                            |  |           | n/a                     |                                 |
|                       | 4   | Lift speed. Without load - with load                         |  | m/s       | 0,44/0,36               |                                 |
|                       | 4a  | Lift time. Without load - with load                          |  | s         |                         |                                 |
|                       | 4b  | Lift speed, ergolift. Without load - with load               |  | m/s       |                         |                                 |
|                       | Drive capacities  | 5  | Lowering speed. Without load - with load |           | m/s                     | 0,41/0,45                       |
| 5a                    |   | Lowering time. Without load - with load                      |  | s         |                         |                                 |
| 6                     |   | Drive speed. Without load - with load                        |  | km/h      | 12/12                   |                                 |
| 6a                    |   | Drive speed. Without load - with load                        |  | m/s       |                         |                                 |
|                       |   | Acceleration 0-10 m  |  |           |                         |                                 |
|                       |   | Without load - with load                                     |  | s         | 5,2/5,5                 |                                 |
| 8                     |   | Gradient, without load / with load                           | max                                      | %         | 6,2                     |                                 |
| 10                    |   | Turning radius   | R2                                       | mm        | 2020                    |                                 |
| 11                    |   | Smallest practical stacking aisle incl 200 mm play           |  |           |                         |                                 |
|                       |   | Load length 1200 mm  | Ast                                      | mm        |                         |                                 |
|                       |   | Load length 1000 mm  | Ast                                      | mm        |                         |                                 |
|                       |   | Load length 800 mm   | Ast                                      | mm        |                         |                                 |
|                       |   | Aisle width requirement according to BITA GN9 UK market only | A1                                       | mm        |                         |                                 |
|                       |   |  | A2                                       | mm        |                         |                                 |
|                       |   |  | A3                                       | mm        |                         |                                 |
|                       | Smallest practical stacking aisle with pallet LL 1200 with the platform folded up/folded down | Min  | mm                                       |           |                         |                                 |
| 11a                   | Intersecting aisle width. Load length 1200 mm   | Min  | mm                                       |           |                         |                                 |
| 11c                   | Max load length   | LL   | mm                                       |           |                         |                                 |
| 11d                   | Max load width  | LB   | mm                                       |           |                         |                                 |
| Truck measurements    | 13  | Height of overhead guard                                     | H6                                       | mm        | 2356                    |                                 |
|                       | 13a   | Height of driver seat  | H7                                       | mm        | 215-H4                  |                                 |
|                       | 13b   | Step-in height   | Y1                                       | mm        | 215-H4                  |                                 |
|                       | 13c   | Floor height   |  | mm        | 6000-10500              |                                 |
|                       | 13d   | Width of open gate   |  | mm        |                         |                                 |
|                       | 14  | Truck length   | L  | mm        | 3290                    |                                 |
|                       | 15  | Truck width  | B  | mm        | 1170, 1350              |                                 |
|                       | 15a   | Width over guide wheels                                      | A  | mm        | 1348-1814               |                                 |
|                       | 15b   | Width over stabilisers                                       | S  | mm        | n/a                     |                                 |
|                       | 15c   | Platform length  |  | mm        |                         |                                 |
|                       | 15d   | Platform width   | B3                                       | mm        | 1150, 1300, 1500        |                                 |
|                       | 15e   | Height of platform gates                                     |  | mm        |                         |                                 |
|                       | 16  | Fork length  | L1                                       | mm        | 1150                    |                                 |
|                       | 17  | Width over forks   | V max/min                                | mm        | 450-800                 |                                 |
|                       | 17a   | Width between forks  |  | mm        |                         |                                 |
|                       | 18  | Reach length   | U  | mm        | n/a                     |                                 |
|                       | 19  | Distance from back plate to retracted fork heel              | L4 T-mast                                | mm        |                         |                                 |
|                       |   | Distance from back plate to retracted fork heel              | L4 DT-mast                               | mm        | 2139                    |                                 |
|                       | 20  | Fork arm, width - thickness                                  | B1                                       | mm        | 147/70                  |                                 |
|                       | 20a   | Fork height, lowered, max                                    | H1                                       | mm        | 90                      |                                 |
|                       | 21  | Straddle height  | H8                                       | mm        | 175                     |                                 |
|                       | 22  | Width between straddles                                      | B2                                       | mm        | n/a                     |                                 |
|                       | 22a   | Width over straddles   |  | mm        | n/a                     |                                 |
|                       | 23  | Distance between front axle and retracted fork heel          | L2                                       | mm        | 126                     |                                 |
|                       | 23a   | Distance between front axle and centre of attachment         | L2                                       | mm        |                         |                                 |
|                       | 23b   | Distance between front axle and heel of extended fork        | X1                                       | mm        |                         |                                 |
| 24                    | Axle distance   | L3   | mm                                       | 1760      |                         |                                 |
| 25                    | Wheel track, front rear (centre lines wheels)   |  | mm                                       | 1006/1186 |                         |                                 |
| 26                    | Ground clearance at half axle distance  |  | mm                                       | 25        |                         |                                 |
| Weights               | 27  | Total weight with-without battery.                           |  |           | kg                      | 2720 kg + 97 x H4 (m) Min batt. |
|                       | 28  | Max axle pressure, fork side, without/ with classified load  |  |           | kg                      | 1590/3450 Min batt.             |
|                       | 29  | Max axle load, drive side, without/with classified load      |  |           | kg                      | 2220/1610 Min batt.             |
|                       | 30  | Max wheel point loading, without/with classified load        |  |           | MPa                     | 4,4/5,0                         |
| Motors                | 39  | Battery capacity   |  |           | kWh/Ah                  | Min 500, Max 620                |
|                       | 39a   | Battery voltage  |  |           | V                       | 48                              |
|                       | 41  | Drive motor  |  |           | kW                      | 5,9                             |
|                       | 42  | Speed regulation   |  |           |                         | AC traction                     |
|                       | 43  | Lift motor. Output/Interm. conn.time                         |  |           | kW-%/min                | 11                              |
| 43a                   | Hydraulic pressure  |  |  | MPa       |                         |                                 |
| Steering/brake system | 44  | Wheel type, drive wheel/others                               |  |           |                         | Vulcollan                       |
|                       | 44a   | Number of wheels, drive/castor - load wheels                 |  |           |                         | 1x/8                            |
|                       | 45  | Wheel dimensions   |  |           |                         |                                 |
|                       | 45a   | Load wheels - diameter x width                               |  |           | mm                      | 150x55                          |
|                       | 45b   | Drive wheel - diameter x width                               |  |           | mm                      | 355x155                         |
|                       | 45c   | Castor wheels - diameter x width                             |  |           | mm                      | n/a                             |
|                       | 46  | Steering   |  |           |                         | El.power steering               |
| 47                    | Service brake - Type-acting on  |  |  |           | Electric                |                                 |
| 48                    | Parking brake - Type-acting on.   |  |  |           | Electric                |                                 |

\* Varies according to battery size