



## EPT20-20RA(S) EPT25-25RA(S) EPT20-20RASH Electric Pallet Truck 2.0/2.5t

Ideal Option for High Intensity & Long Distance Material Handling Tasks;  
Driving Wheel Pressure Auto-compensation Patent Makes Operation Comfortable & Smooth;  
Dual-Monitoring Electric Steering Offers Safer and Simpler Operation;  
Driving Speed up to 12KM/H Greatly Improves the Efficiency of Long-distance Material Handling.

**EP EQUIPMENT CO.,LTD**  
[www.ep-ep.com](http://www.ep-ep.com)

## FEATURE



### Safety

- Circular plate design of Front frame, improve the front frame safety when lifting, avoid nipping hands.
- Circular design of back frame surrounded plate, ensure the good trafficability, The accurate design from ground clearance of back truck body avoid hurt of the operator feet.
- Emergency reverse function protect the operator from hurt.
- The emergency connector can be knobbed up to cut off all the power to avoid the sudden accident when the truck is out of control.
- The function of skidproof brake avoid the truck skidding down when truck is out of control or travel on grade.
- Shelves option, avoid cargo falling down.
- Long operator handle, avoid crash between truck and operator.



### Operation

- With the new designed ergonomically handle, all buttons are controlled convenient & comfortable.
- Thanks to the long handle design, it decreases the steering force greatly which leads to easy operations.
- Suitable to all popular pallets for its special fork design.
- More than 180° handle rotation range, & compact body, ensure small turning radius & excellent maneuverability.
- Creep speed function: when handle in vertical position, the driving speed will decrease automatically, allowed delicate operation in a confined space.
- Driving Switch for vertical handle (optional)



### Performance

- The innovative AC system offers strong power, accurate control, excellent performance.
- High strength vertical gearbox, longer working life.
- Low noisy low fault Hydraulic station, multilayer detection and test cylinder and pipeline ensure the high reliable of hydraulic system.
- High Reliable AMP connector and electric parts. Reliable protect and fixation for all electric wires and cables, reduce the fault of electric parts greatly.
- Once shaping fork, box type frame, Adjustable long connecting rod, ensure the whole truck frame no deformation after long time working.
- Innovative Drive floating operation system(DFA) ensure the truck stable, no slope when steering with high speed(Mechanical steering)

### Maintenance

- AC traction motor, maintenance free.
- Hour meter and battery indicator will reminder the operator to recharge the battery.
- Dismantle the back cover easily only by loosening two bolts, then access to all key components for inspection, maintenance and replacement.
- Be convenient to add distilled water or electrolyte for battery.
- Motor vertically mounted makes the inspection & service of motor and brake much more convenient than that of motor horizontally mounted.
- Self-diagnostics system shows error code through handset which allow easy trouble-shooting.
- Automatic protection when the voltages of battery is low.

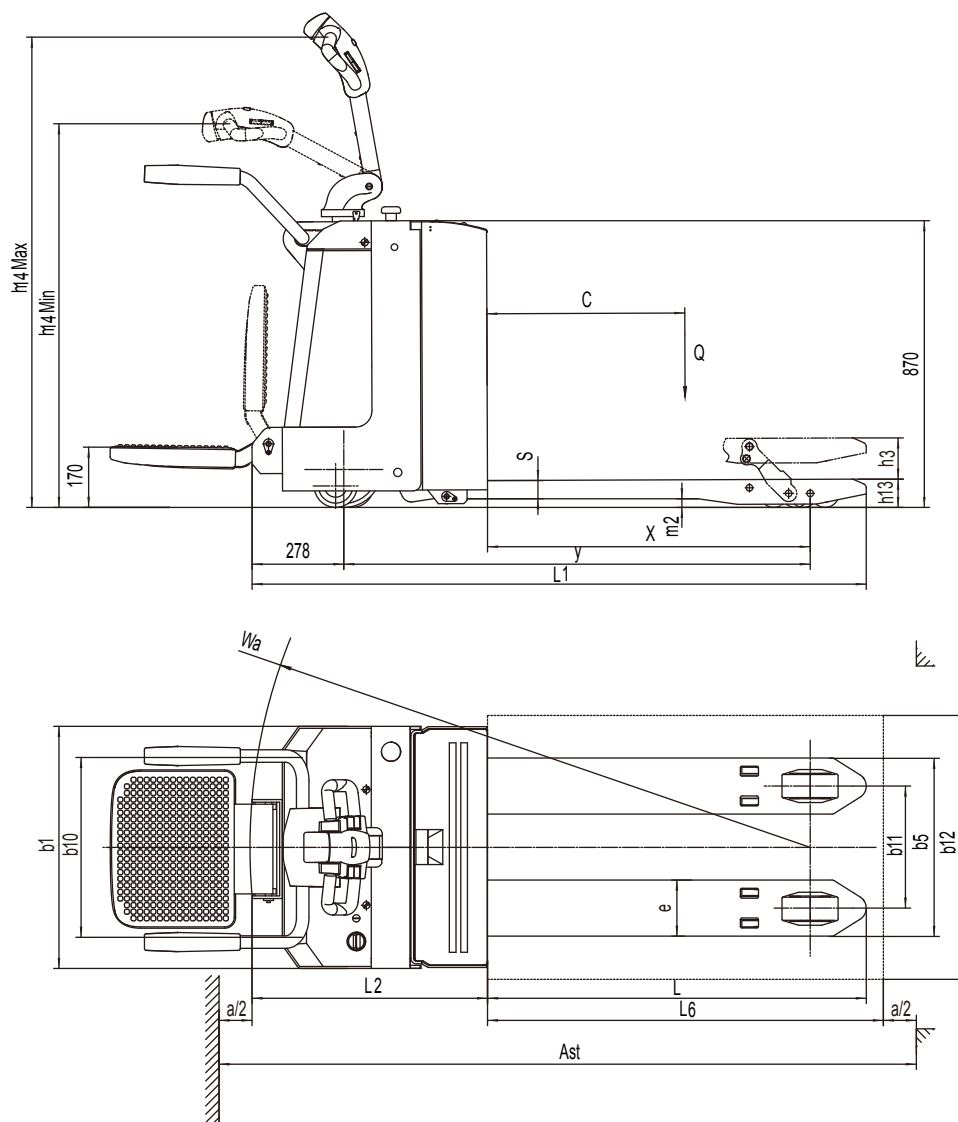


# Electric Pallet Truck 2.0/2.5t EPT20-20RA(S)/EPT25-25RA(S)

| Distinguishing mark |  |                                 |      |                             |                 |                             |                 |
|---------------------|--|---------------------------------|------|-----------------------------|-----------------|-----------------------------|-----------------|
| 1.1                 | Manufacturer   |                                 |      | EP                          |                 | EP                          |                 |
| 1.2                 | Model designation  |                                 |      | EPT20-20RA ( S )            |                 | EPT25-25RA ( S )            |                 |
| 1.3                 | Drive unit   |                                 |      | Electrics                   |                 | Electrics                   |                 |
| 1.4                 | Operator type  |                                 |      | standing                    |                 | standing                    |                 |
| 1.5                 | rated capacity   | Q                               | kg   | 2000                        |                 | 2500                        |                 |
| 1.6                 | Load center distance                                     | c                               | mm   | 600                         |                 | 600                         |                 |
| 1.8                 | Load distance  | x                               | mm   | 916 / 982                   | 937 / 1003      | 916 / 982                   | 937 / 1003      |
| 1.9                 | Wheelbase  | y                               | mm   | 1418                        | 1438            | 1418                        | 1438            |
| Weight              |  |                                 |      |                             |                 |                             |                 |
| 2.1                 | Service weight (include battery)                         |                                 |      | kg                          |                 | 670                         |                 |
| 2.2                 | Axle loading, laden driving side/loading side            |                                 |      | kg                          |                 | 1066 / 1604                 |                 |
| 2.3                 | Axle loading, unladen driving side/loading side          |                                 |      | kg                          |                 | 546 / 124                   |                 |
| Types,Chassis       |  |                                 |      |                             |                 |                             |                 |
| 3.1                 | Tyre type driving wheels/loading wheels                  |                                 |      | Polyurethane / Polyurethane |                 | Polyurethane / Polyurethane |                 |
| 3.2                 | Tyre size, driving wheels ( diameter×width )             |                                 |      | mm                          |                 | Φ230x75                     |                 |
| 3.3                 | Tyre size, loading wheels ( diameter×width )             |                                 |      | mm                          |                 | Φ85x70 / Φ83x115            |                 |
| 3.4                 | Tyre size, caster wheels ( diameter×width )              |                                 |      | mm                          |                 | Φ130x60                     |                 |
| 3.5                 | Wheels, number driving , caster/loading (x=drive wheels) |                                 |      | mm                          |                 | 1 x +2 / 4 / 1 x + 2 / 2    |                 |
| 3.6                 | Track width, front,driving side                          | b <sub>10</sub>                 | mm   | 510                         |                 | 510                         |                 |
| 3.7                 | Track width,rear,loading side                            | b <sub>11</sub>                 | mm   | 370 / 430 / 515             |                 | 370 / 430 / 515             |                 |
| Dimensions          |  |                                 |      |                             |                 |                             |                 |
| 4.4                 | Lift height  | h <sub>3</sub>                  | mm   | 125                         |                 | 125                         |                 |
| 4.9                 | Height drawbar in driving position min./max.             | h <sub>14</sub>                 | mm   | 1150 / 1470                 |                 | 1150 / 1470                 |                 |
| 4.15                | Lowered height   | h <sub>13</sub>                 | mm   | 85                          |                 | 85                          |                 |
| 4.19                | Overall length   | l <sub>1</sub>                  | mm   | 1860                        | 1930            | 1860                        | 1930            |
| 4.20                | Length to face of forks                                  | l <sub>2</sub>                  | mm   | 710                         |                 | 710                         |                 |
| 4.21                | Overall width  | b <sub>1</sub> / b <sub>2</sub> | mm   | 730                         |                 | 730                         |                 |
| 4.22                | Fork dimensions  | s/ e/ l                         | mm   | 55 x 170 x 1150             | 55 x 170 x 1220 | 55 x 170 x 1150             | 55 x 170 x 1220 |
| 4.25                | Distance between fork-arms                               | b <sub>5</sub>                  | mm   | 540 / 600 / 685             |                 | 540 / 600 / 685             |                 |
| 4.32                | Ground clearance, center of wheelbase                    | m <sub>2</sub>                  | mm   | 30                          |                 | 30                          |                 |
| 4.34.1              | Aisle width for pallets 1000 × 1200 crossways            | Ast                             | mm   | 1984                        |                 | 1984                        |                 |
| 4.34.2              | Aisle width for pallets 800 × 1200 lengthways            | Ast                             | mm   | 2184                        |                 | 2184                        |                 |
| 4.35                | Turning radius   | Wa                              | mm   | 1700                        |                 | 1700                        |                 |
| Performance data    |  |                                 |      |                             |                 |                             |                 |
| 5.1                 | Travel speed, laden/ unladen                             | km/ h                           | km/h | 5.5 / 6                     |                 | 5.5 / 6                     |                 |
| 5.2                 | Lifting speed, laden/ unladen                            |                                 | m/ s | 0.051 / 0.060               |                 | 0.055 / 0.060               |                 |
| 5.3                 | Lowering speed, laden/ unladen                           |                                 | m/ s | 0.032 / 0.039               |                 | 0.030 / 0.039               |                 |
| 5.8                 | Max. gradeability, laden/unladen                         |                                 |      | 8 / 16                      |                 | 6 / 16                      |                 |
| 5.10                | Service brake type                                       |                                 |      | Electromagnetic             |                 | Electromagnetic             |                 |
| Electric-engine     |  |                                 |      |                             |                 |                             |                 |
| 6.1                 | Drive motor rating S2 60 min                             |                                 | kW   | 1.5                         |                 | 1.5                         |                 |
| 6.2                 | Lift motor rating at S3 15%                              |                                 | kW   | 0.84                        |                 | 0.84                        |                 |
| 6.3                 | The maximum allowed size battery                         |                                 | mm   | 660 x 205 x 660             |                 | 660 x 205 x 660             |                 |
| 6.4                 | Battery voltage/nominal capacity K5                      |                                 | V/Ah | 24 / 210                    |                 | 24 / 210                    |                 |
| 6.5                 | Battery weight   |                                 | kg   | 190                         |                 | 190                         |                 |
| Addition data       |  |                                 |      |                             |                 |                             |                 |
| 8.1                 | Type of drive control                                    |                                 |      | AC                          |                 | AC                          |                 |
| 10.5                | Steering type  |                                 |      | Mechanical/Electronic       |                 | Mechanical/Electronic       |                 |
| 10.7                | Sound pressure level at the driver's ear                 |                                 |      | 74                          |                 | 74                          |                 |

1.The parameters in the table are the standard model, for more information please contact us.

2.The parameters are subject to change without notice.



## Option

| Options                              | EPT20-20RA/20RAS                           | EPT25-25RA/25RAS                           | EPT20-20RASH                               |
|--------------------------------------|--|--|--|
| Fork length                          | ● 850/1000/1300/1450/1600/1800/2000/2400mm | ● 850/1000/1300/1450/1600/1800/2000/2400mm | ● 850/1000/1300/1450/1600/1800/2000/2400mm |
| Fork spread                          | ● 790/840mm                                | ● 790/840mm                                | ● 790/840mm                                |
| Driving wheel                        | ● PU                                       | ● PU                                       | ● PU                                       |
| high capacity battery                | ● 240Ah/270Ah/360Ah                        | ● 240Ah/270Ah/360Ah                        | ● 240Ah/270Ah/360Ah                        |
| lateral battery change               | ● 165Ah/210Ah/240Ah                        | ● 165Ah/210Ah/240Ah                        | ● 165Ah/210Ah/240Ah                        |
| Cold storage                         | ●  | ●  | ●  |
| battery indicator without hour meter | ●  | ●  | ●  |
| water auto-filling system            | ●  | ●  | ●  |
| Special backrest                     | ● 1220mm (48in)/1520mm (60in)              | ● 1220mm (48in)/1520mm (60in)              | ● 1220mm (48in)/1520mm (60in)              |